

Cooperative rangeland management of neighboring resettled farms



Bertus Kruger
Namibia Rangeland Forum, 2009



NAMIBIA NATIONAL
FARMERS UNION

Tel: (061) 271117

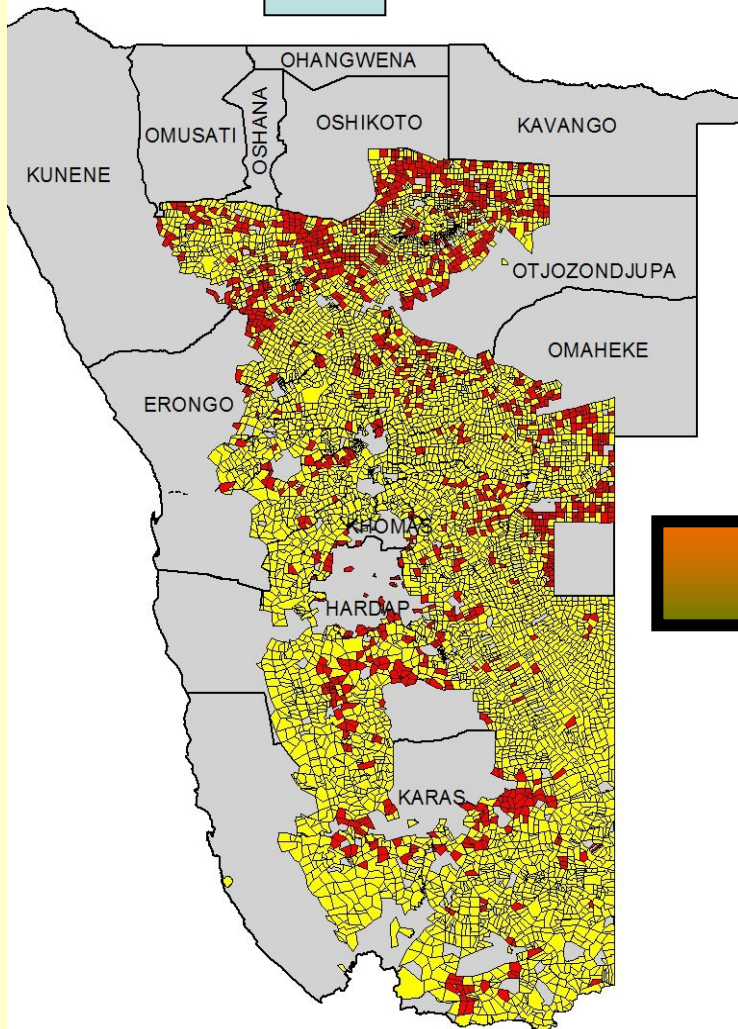
Joint Presidency Committee



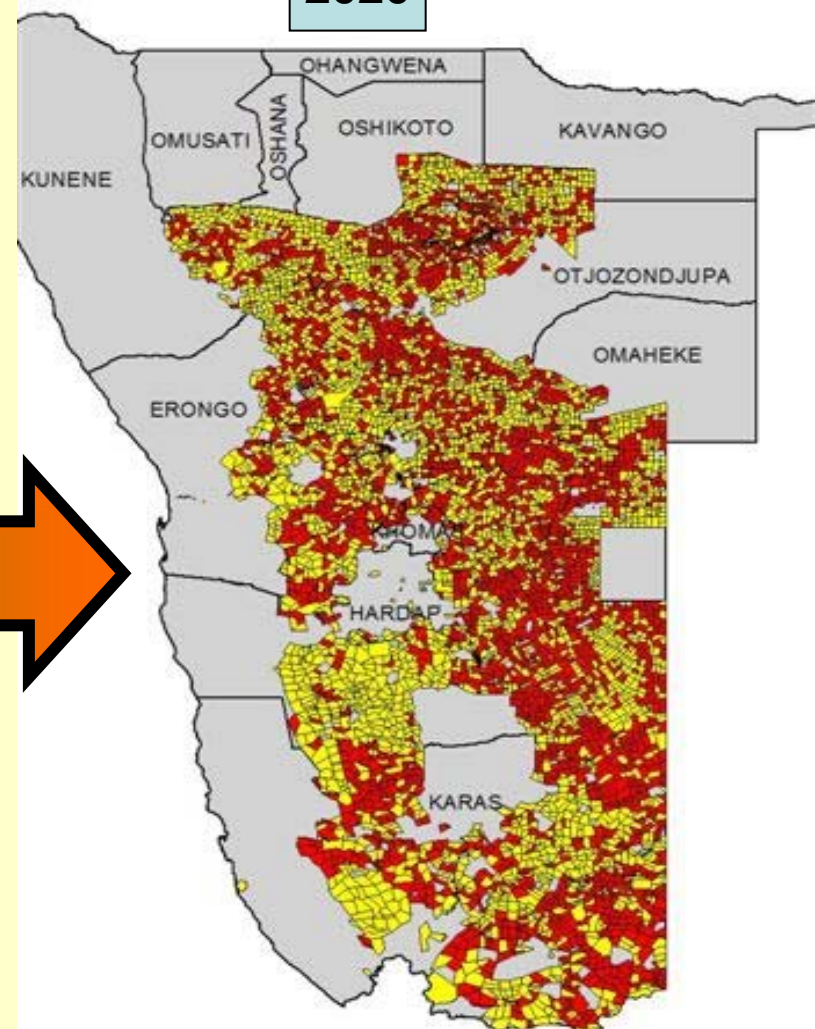
NAMIBIA AGRICULTURAL
UNION

Tel: (061) 237838

2007



2020



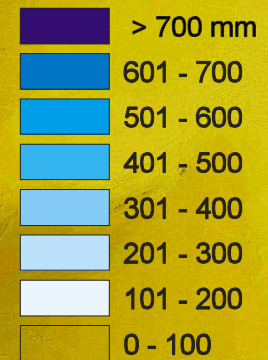
Source: Namibia Nature Foundation

RIVERS
RAINFALL
and
LAND
CAPABILITY

Namibia is an arid country

Evaporation exceeds rainfall by a factor of 5 times

KEY TO RAINFALL

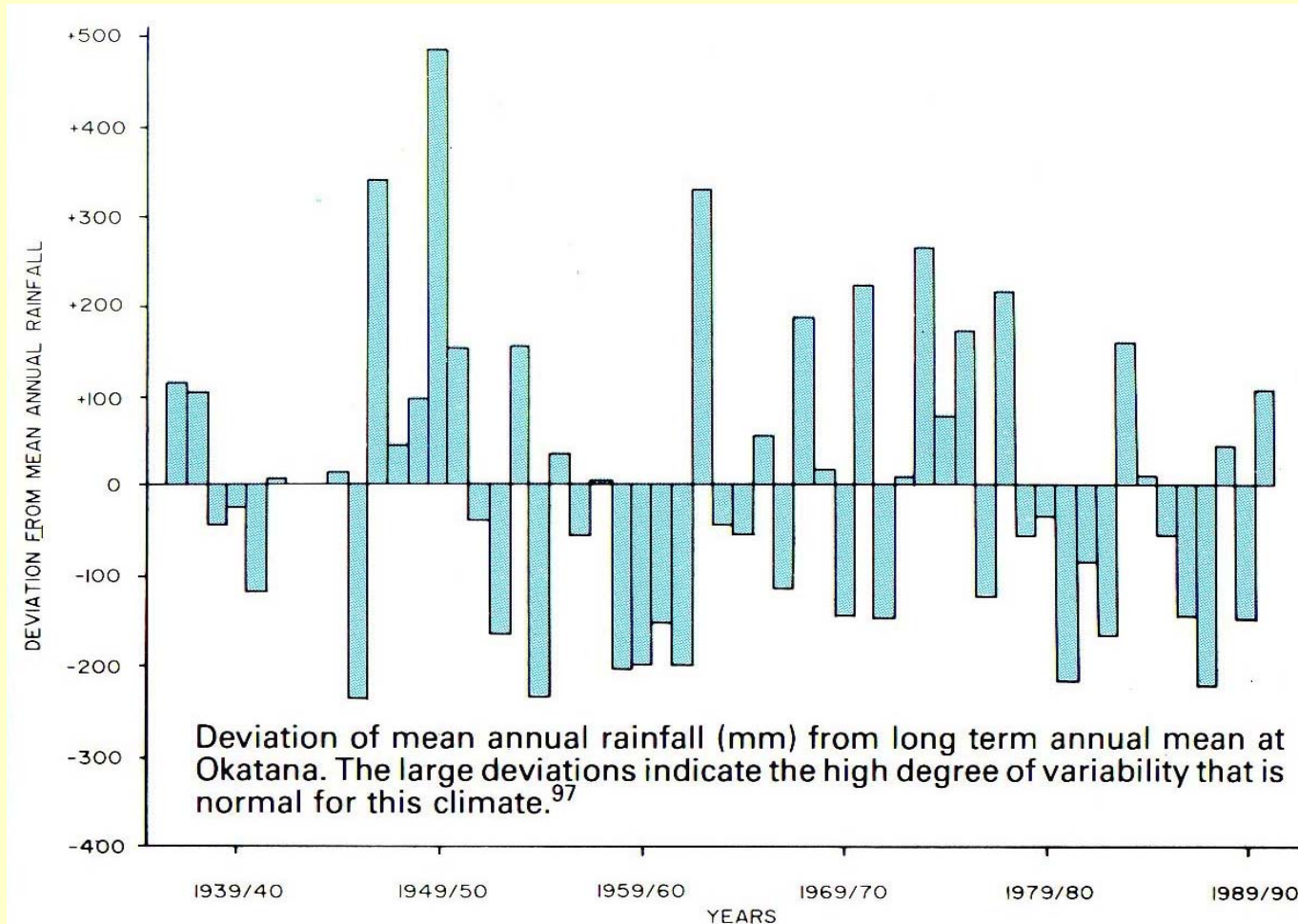


Key to Land Capability

	<i>Wildlife</i>	<i>Domestic Livestock</i>	<i>Crops</i>
Desert	+		
Arid	+	Marginal	
Semi-arid	+	Marginal	Marginal
Semi-arid	+	Low	Marginal
Sub-humid	+	Medium	Low

Okatana long-term rainfall record

(Northern Namibia)



Critical Question 1

How can livestock farmers in Namibia reduce their vulnerability to extreme seasonal rainfall variation and fodder shortages?....



**... in other words
how can they prevent
OVERSTOCKING?**



Critical Question 2



How can livestock farmers in Namibia maintain and/or improve the productivity of their rangelands?

**... in other words
how can they prevent
OVERGRAZING?**



FARM MAP

Verlang No. 44 (5053ha)
Omaheke Region

This farmer has 7 camps and can as individual apply some form of rangeland management

This farmer has only 2 camps and can not apply proper rangeland management

With only 1 camp it is impossible to apply any form of rangeland management

Sandpan No. 43

Becker No. 45

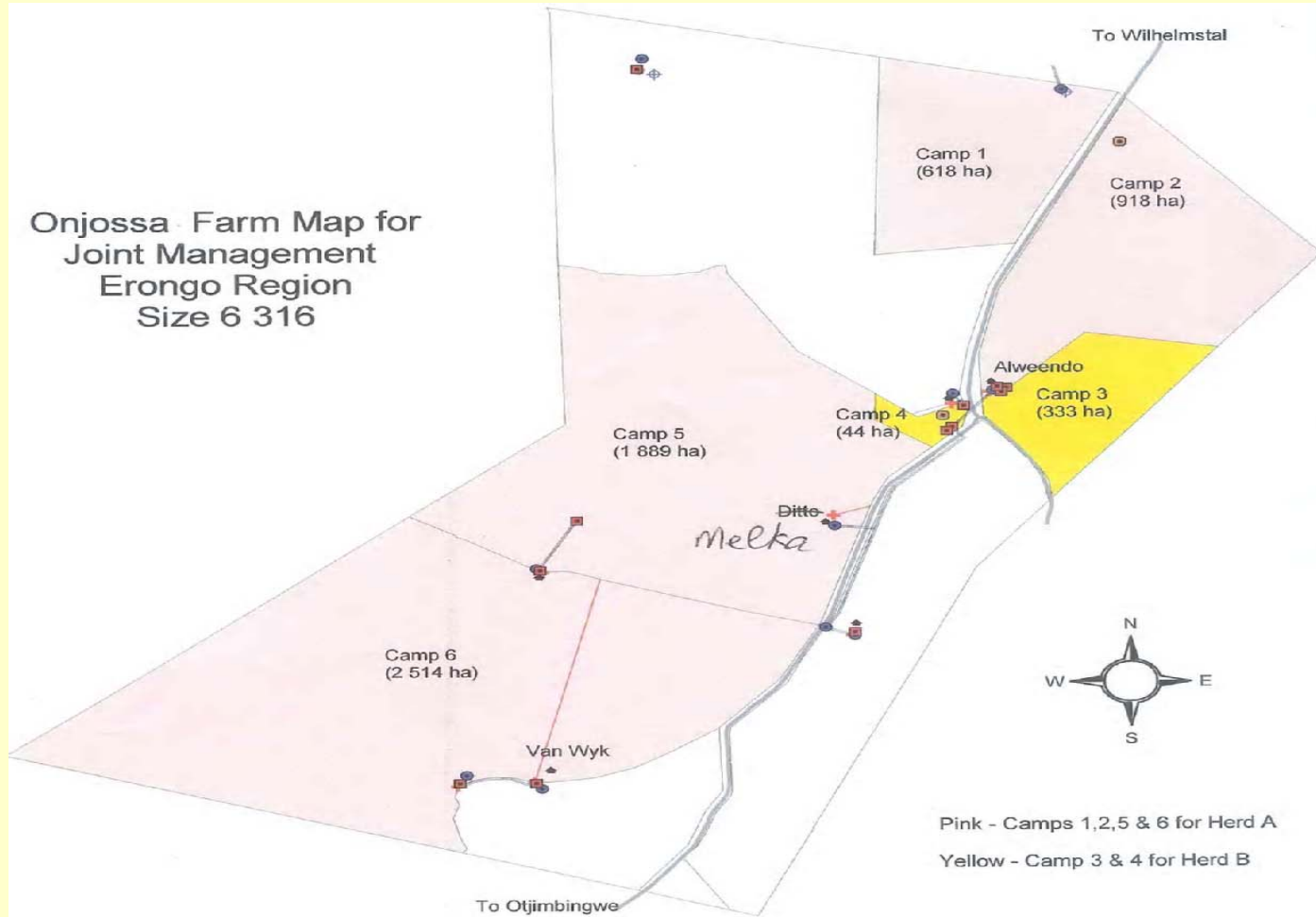
Maryland No.42



LEGEND

	Proposed demarcation of camps		Basson		Apollonia Aies.
	Cosmos & Tjihoreko		Gerson		Anna
	Gerson & Cosmos		Orpa Murangi		Farm
	Tjihoreko		Andries swartbooi		

**Onjossa Farm Map for
Joint Management
Erongo Region
Size 6 316**

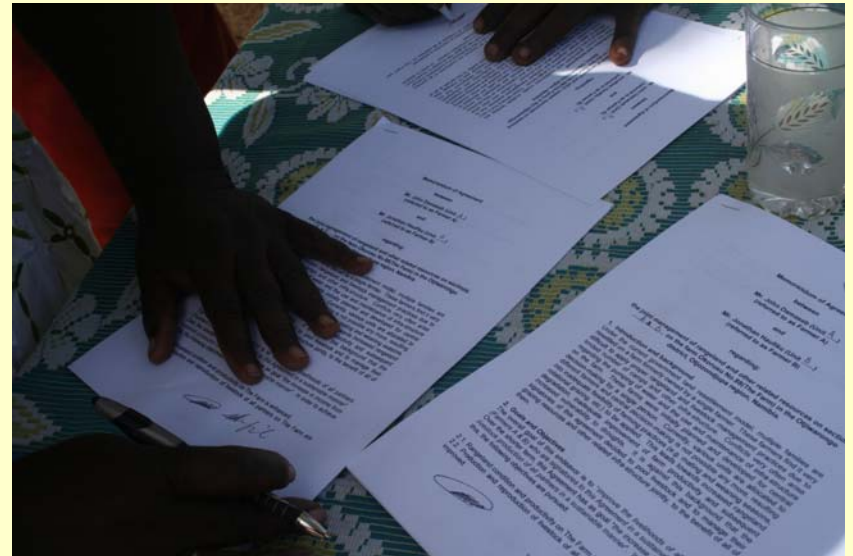
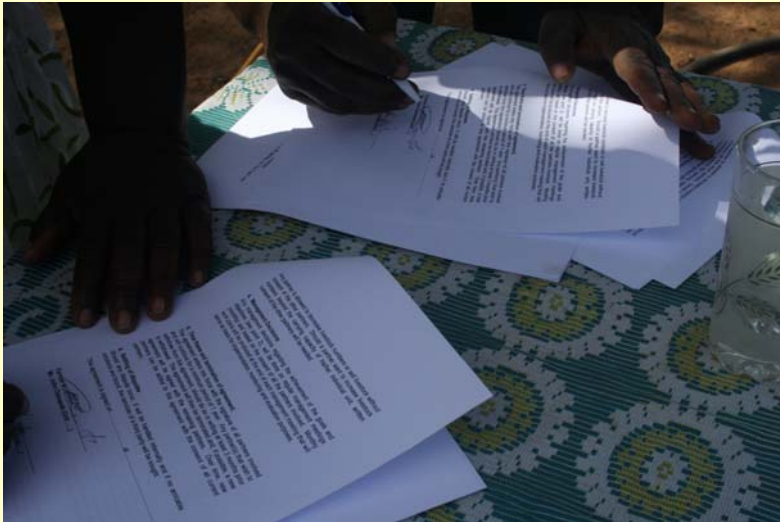


Pink - Camps 1,2,5 & 6 for Herd A
Yellow - Camp 3 & 4 for Herd B

Legend									
◆	Homestead	—	Pipeline	⊙	Earth dam	□	Ditto	□	Farm
■	Borehole	⊕	Game waterpoint	—	Self demarcation	□	Van wyk		
●	Reservoir	+	Kraal	—	Road	□	Alweendo		

Interventions

- MoU signed between participating farmers



Interventions

- Monthly work plans as M&E&A tool

	Activity	Responsible	Support	Date	Remarks / Assessment
1	Address water issues with M.L.R.	Bertus	M.L.R.	27-Apl.	
2	Inform D.V.S. about permit issues	Bertus	D.V.S.	27-Apl.	
3	Provision of lick	Bertus	Voermeester	27-Apl.	
4	Remove rams from herds	Owners		4-May	
5	Move cows to Ditto's camp	Owners		4-May	
6	Move young animals to Alweendo's camp	Owners		4-May	

Interventions

- DVS: Test bulls for fertility and health



Interventions

- Agra: Donate ear tags



Interventions

- Intervet & Virbac: Vaccination



Interventions

- Brahman & Bonsmara breeders: Donate bulls



Interventions

- Voermeester: Support in Lick supplementation?



Achievements

- From no rangeland management system to some form of planned grazing system.
- From no breeding season to a summer breeding season of 3 months
- Introduction of vaccinations
- Bulls tested and sick and infertile once sold
- Lick supplementation???
- Husbandry practices e.g. castration, de-horning done

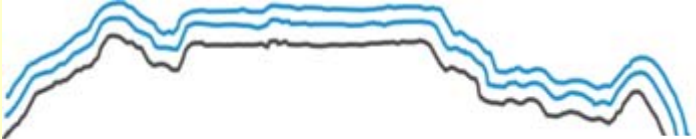


Challenges

- Water infrastructure – MLR???
- Supervision and management of joint herds
- Availability of rams
- Commitment



Stakeholders



Blaauwberg Auctioneers CC